

# BDPG-45-68 Series



FEATURES

- **DC Brush Planetary Gearmotor**
- **Designed for High Volume Applications**
- **Up to 1416 oz-in of Continuous Torque**
- **45 mm Motor Body Diameter**



DESCRIPTION

The BDPG-45-68 Series was designed for high volume OEM applications with low cost being the primary objective. These reliable low cost Brush DC Planetary Gearmotors come in variety of power levels, sizes, and will be sure to fit your needs. The motors are fully reversible. The BDPG-45-68 Series is a cost-effective solution to manage motion control in many rotary applications including medical, semiconductor, pumps, robotics, hobby, CNC, and many other applications where a low cost Brush DC Planetary Gearmotor is needed.

SPECIFICATIONS

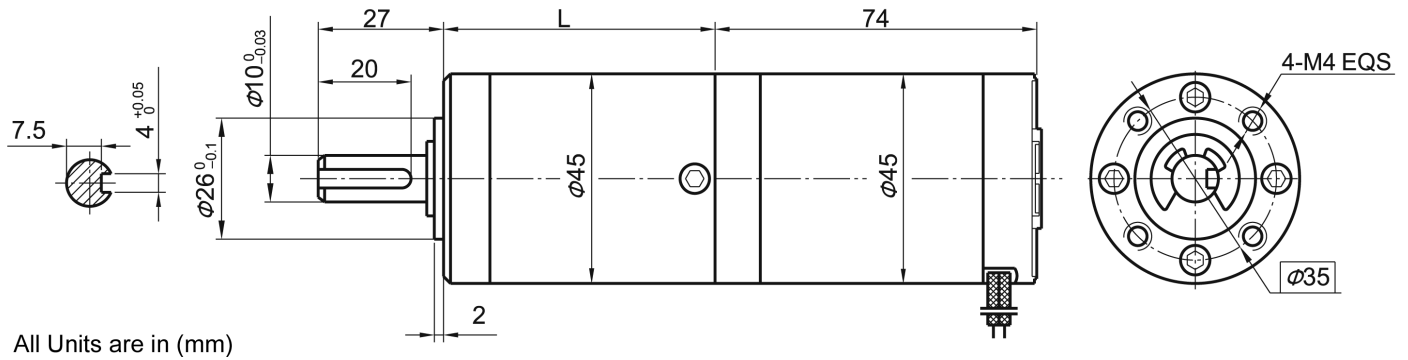
Motor Specs	Rated Voltage (VDC)	No Load Current (A)	Rated Current (A)	Stall Current (A)	Output Power (W)	Motor Stall Torque (kg-cm)
BDPG-45-68-24V-3000-Rxx	24	0.20	0.8	2.7	12	1.94

Gear Ratio (Rxx)	3.71	5.18	14	19	27	51	71	100	139	189	264	369
Number of Gear Trains	1		2			3			4			
Length (mm) - "L"	35.3	35.5	45.6			58.4			68.7			
No Load Speed (RPM)	809	579	214	158	111	59	42	30	22	16	11	8.1
Rated Speed (RPM)	647	463	171	126	89	47	34	24	17	13	9.1	6.5
Rated Torque (kg-cm)	1.53	2.14	5.20	7.04	10.00	17.33	23.45	33.65	46.91	57.10	79.54	101.97
Peak Torque (kg-cm)	30.59		122.37			254.93			305.91			

Motor Specs	Rated Voltage (VDC)	No Load Current (A)	Rated Current (A)	Stall Current (A)	Output Power (W)	Motor Stall Torque (kg-cm)
BDPG-45-68-24V-4000-Rxx	24	0.30	1.2	3.0	18	1.99

Gear Ratio (Rxx)	3.71	5.18	14	19	27	51	71	100	139	189	264	369
Number of Gear Trains	1		2			3			4			
Length (mm) - "L"	35.3	35.5	45.6			58.4			68.7			
No Load Speed (RPM)	1078	772	286	211	148	78	56	40	29	21	15	11
Rated Speed (RPM)	862	617	228	168	118	62	45	32	24	17	12	9
Rated Torque (kg-cm)	1.84	2.65	5.51	8.57	12.24	20.39	28.55	40.79	57.10	69.34	96.87	101.97
Peak Torque (kg-cm)	30.59		122.37			254.93			305.91			

L010459



Backlash No Load:	< 3°	Thrust Play of Shaft:	< 0.3mm
Housing Material:	Steel	Radial Play of Shaft:	0.08mm
Bearing at Output:	Sleeve Bearing	Shaft Press Fit Force, Max:	22lbs
Humidity:	70%-85%	Operating Temperature:	-10°C - 40°C
Radial Load(10mm From Flange):	8.8lb	Shaft Axial Load:	< 6.6lb