

# TBI-TRH25 - Linear Guides



SPECIFICATIONS

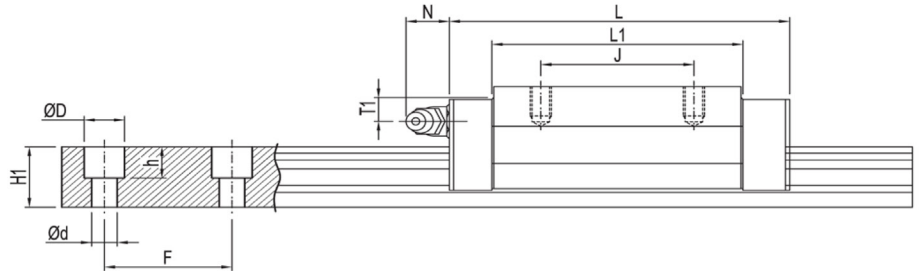
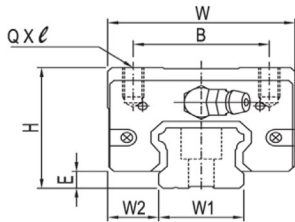
Block Part Number	Fabrication Dimensions (mm)			Block Dimensions (mm)								Load Capacities (KN)		Static Moment (Nm)			Weight (lbs)
	H	W <sub>2</sub>	E	W	B	J	t	L	L1	QxL	T1	C	C <sub>0</sub>	M <sub>x</sub>	M <sub>y</sub>	M <sub>z</sub>	
TBI-TRH25FN-N-Z0	36	23.5	5.8	70	57	45	12	81	59	M8x12	7.5	25.3	44.2	512.3	425.7	425.7	1.3
TBI-TRH25FL-N-Z0	36	23.5	5.8	70	57	45	12	92	71	M8x12	7.5	28.2	51.5	597.7	584.3	584.3	1.5
TBI-TRH25FE-N-Z0	36	23.5	5.8	70	57	45	12	110	88	M8x12	7.5	31.9	61.3	711.5	834.7	834.7	1.9
TBI-TRH25VN-N-Z0	40	12.5	5.8	48	35	35	---	81	59	M6x8	11.5	25.3	44.2	512.3	425.7	425.7	1.2
TBI-TRH25VL-N-Z0	40	12.5	5.8	48	35	35	---	92	71	M6x8	11.5	28.2	51.5	597.7	584.3	584.3	1.4
TBI-TRH25VE-N-Z0	40	12.5	5.8	48	35	50	---	110	88	M6x8	11.5	31.9	61.3	711.5	834.7	834.7	1.7

Rail Part Number	Rail Dimensions (mm)							Rail Length (mm)	Weight (lbs)
	W <sub>1</sub>	H <sub>1</sub>	F	D	d	d x D x h			
TBI-TR25N-0150-15-15	23	20	60	11	7	7 x 11 x 9	150	1.1	
TBI-TR25N-0300-30-30	23	20	60	11	7	7 x 11 x 9	300	2.1	
TBI-TR25N-0500-10-10	23	20	60	11	7	7 x 11 x 9	500	3.5	
TBI-TR25N-0700-20-20	23	20	60	11	7	7 x 11 x 9	700	4.9	
TBI-TR25N-0900-30-30	23	20	60	11	7	7 x 11 x 9	900	6.3	
TBI-TR25N-1100-10-10	23	20	60	11	7	7 x 11 x 9	1100	7.7	
TBI-TR25N-1300-20-20	23	20	60	11	7	7 x 11 x 9	1300	9.1	
TBI-TR25N-1500-30-30	23	20	60	11	7	7 x 11 x 9	1500	10.5	
TBI-TR25N-1700-10-10	23	20	60	11	7	7 x 11 x 9	1700	11.9	
TBI-TR25N-1900-20-20	23	20	60	11	7	7 x 11 x 9	1900	13.3	
TBI-TR25N-2100-30-30	23	20	60	11	7	7 x 11 x 9	2100	14.7	
TBI-TR25N-2300-10-10	23	20	60	11	7	7 x 11 x 9	2300	16.1	
TBI-TR25N-2500-20-20	23	20	60	11	7	7 x 11 x 9	2500	17.5	
TBI-TR25N-2700-30-30	23	20	60	11	7	7 x 11 x 9	2700	18.9	
TBI-TR25N-2900-10-10	23	20	60	11	7	7 x 11 x 9	2900	20.3	
TBI-TR25N-3100-20-20	23	20	60	11	7	7 x 11 x 9	3100	21.7	
TBI-TR25N-3300-30-30	23	20	60	11	7	7 x 11 x 9	3300	23.1	
TBI-TR25N-3500-10-10	23	20	60	11	7	7 x 11 x 9	3500	24.5	
TBI-TR25N-3700-20-20	23	20	60	11	7	7 x 11 x 9	3700	25.9	
TBI-TR25N-3900-30-30	23	20	60	11	7	7 x 11 x 9	3900	27.3	
TBI-TR25N-4000L	23	20	60	11	7	7 x 11 x 9	4000	28.0	

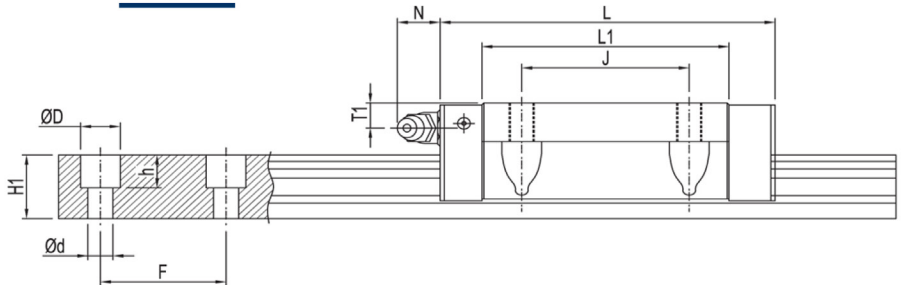
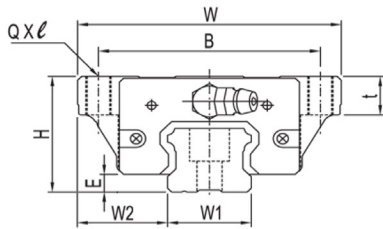
The rated load capacities and static moment values are calculated according to the ISO14728 standard. The rated life for basic dynamic load is defined as the total 100km travel distance that 90% of a group of identical linear guides can be operated individually under the same conditions, free from any material damage caused by rolling fatigue-When the standard of 50km travel distance is applied. The basic dynamic load rating C of ISO14728 should be multiplied by 1.26 for conversion. All standard blocks come with a bottom seal and double lip end seals.

Distributed by Anaheim Automation, Inc.  
 USA Stock in Anaheim, CA  
 1-800-345-9401  
[www.anaheimautomation.com](http://www.anaheimautomation.com)

**TRH-V**



**TRH-F**



**Force Diagram**

