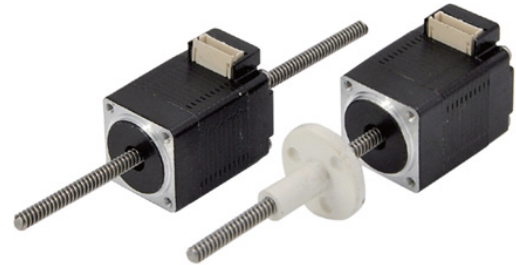


08AW Stepper Linear Actuators



FEATURES

- NEMA Size 08
- Motor Winding Options Available
- Custom Lead Screw Lengths
- Stepper Motor with Internal Nut
- Self Contained Package with Ball Bearings
- 1.8° Step Angle
- From 0.001524mm to 0.02mm Per Full Step



DESCRIPTION

The 08AW Linear Stepper Motors are designed to be the most versatile linear positioning motors on the market. These robust linear actuators, available in non-captive or external linear options, use a NEMA 08 hybrid stepper motor, and can be easily configured to solve difficult application problems. Integration of a lead screw with a motor saves space, eliminates components, and reduces cost. While many standard configurations are available, custom modifications for OEM customers are welcome.

08AW101ACX06-LW4-EL-D

Frame
NEMA 08

30mm Motor Length
0.49A Rated Current

Travel Per Step (mm)	
AB	0.005
AC	0.01
AD	0.02
N	0.003048
U	0.001524

Lead Screw Length "LS" (in)		
CODE	in	mm
01	1"	25.4
1.5	1.5"	38.1
06	6"	152.4
12	12"	304.8
18	18"	457.2

# Of Lead Wires	
LW4	4

Type	
EL	External Linear
NC	Non-Captive
CS	Captive Shaft*

*Captive Shaft Max Stroke is 38.1mm(1.5")

CODE	Accessory
Blank	Standard
D	Encoder Mount Holes and Ext. Shaft

Note: See *Accessories* on our website for optional encoder and/or connector adders.

BUILD A PART NUMBER

Nut Part #	Description
08AW-AC-NUT	Replacement nut for 08AW stepper motor with 2mm lead, Leadscrew thread code AC
08AW-N-NUT	Replacement nut for 08AW stepper motor with 0.6096mm lead, Leadscrew thread code N

L011430

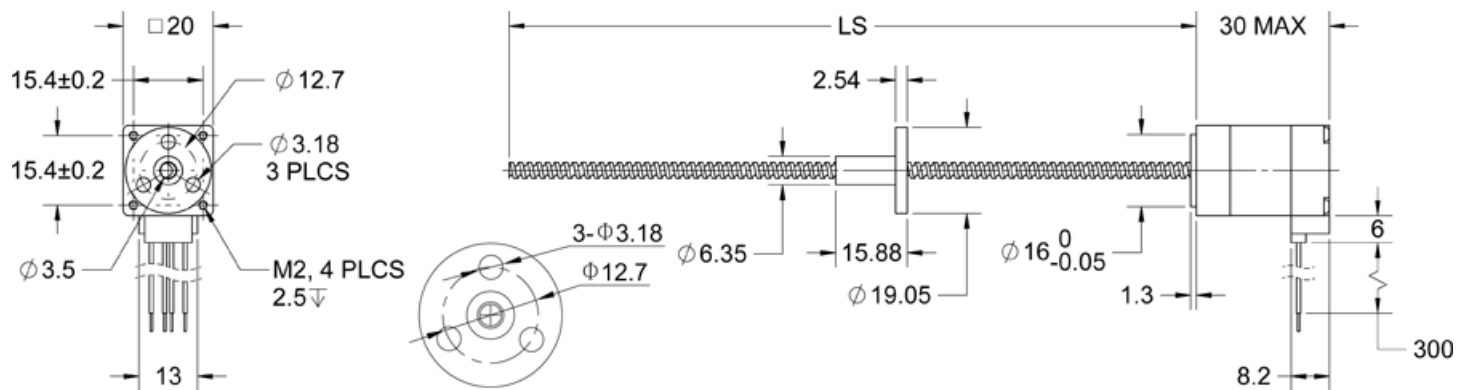
Motor Specifications

Model Number	Voltage (V)	Bipolar Current (A)	Resistance (ohms)	Inductance (mH)	Number of Leads	Motor Weight (lbs)	Motor Length (mm)	Screw Length (in(mm))
08AW101ACX06-LW4-EL	2.5	0.5	5.1 ± 10%	1.0 ± 20%	4	0.09	30	6 (152.4)
08AW101ACX06-LW4-NC	2.5	0.5	5.1 ± 10%	1.0 ± 20%	4	0.09	30	6 (152.4)
08AW101ACX12-LW4-NC	2.5	0.5	5.1 ± 10%	1.0 ± 20%	4	0.14	30	12 (304.8)
08AW101NX06-LW4-NC	2.5	0.5	5.1 ± 10%	1.0 ± 20%	4	0.09	30	6 (152.4)
08AW101NX12-LW4-EL	2.5	0.5	5.1 ± 10%	1.0 ± 20%	4	0.15	30	12 (304.8)
08AW101NX12-LW4-NC	2.5	0.5	5.1 ± 10%	1.0 ± 20%	4	0.09	30	12 (304.8)

Leadscrew Thread Dimension (mm)

Code	Diameter	Step	Lead
AB	3.5	0.005	1
AC	3.5	0.01	2
AD	3.5	0.02	4
N	3.5	0.003848	0.6096
U	3.5	0.001524	0.3048

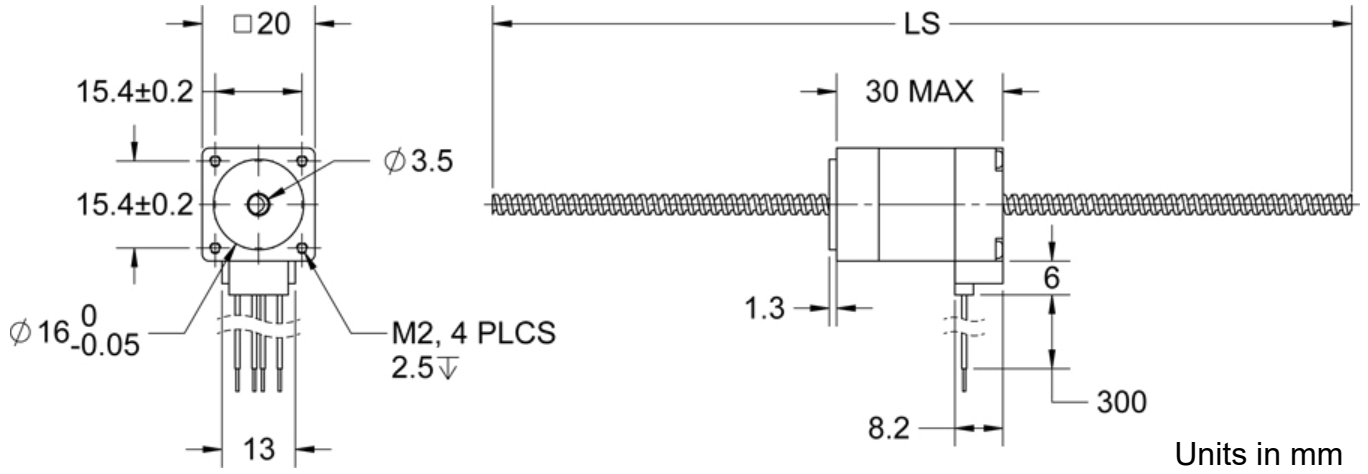
External Linear (EL)



Units in mm

DIMENSIONS

Non-Captive (NC)



WIRING INFORMATION

